



# way | slim

Absolutely incisive



# way | slim

## Absolutely incisive

- ▶ **Way Slim** is the implant to treat cases characterized by **restricted anatomical spaces**, like lower incisors and upper laterals, thanks to the **3 mm** diameter, a feature that makes it unique.

### Double thread

It reduces the number of rotations necessary at insertion, making the positioning of the implant more rapid.

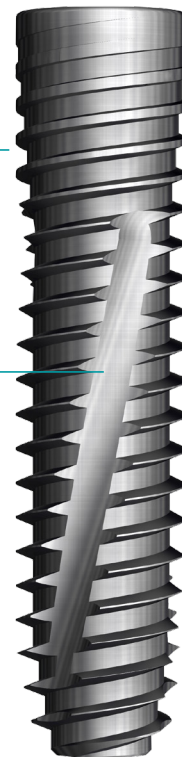
### Longitudinal milling

It increases self-tapping power, so avoiding the use of tappers.

### Extremely simple protocol

Only two drill phases, already used in the surgical protocol of other Way implants.

Way Slim is available in three lengths: 11, 13, 15 mm.





## Internal conical connection with hexagon

It reduces bacterial infiltration and makes the implant to abutment connection stable.



## Reduced size of the restorative platform

It allows the mucosa to create a seal which maintains the biological width and reduces peri-implant bone resorption.

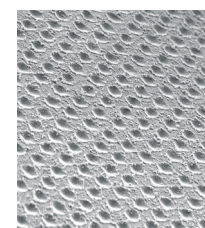
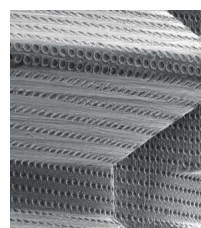


## Synthebra surface

Geass research has developed and patented Synthebra, the laser treated surface which acts in two ways: it fights periimplantitis and promotes osseointegration for long term success.

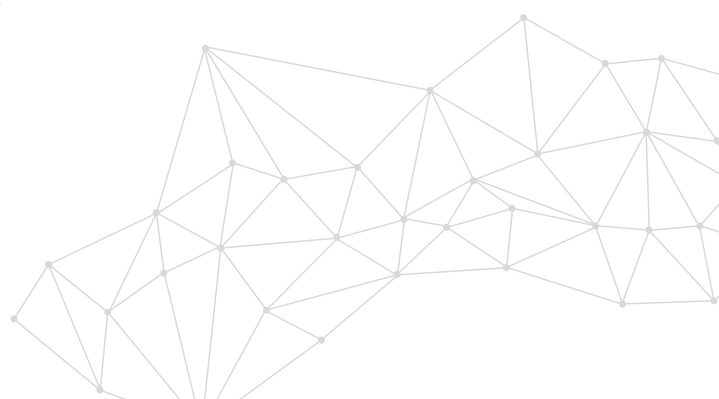
In fact, Synthebra:

- is a smooth surface, able to obstacle bacterial adhesion;
- it behaves like a rough surface, promoting osseointegration.



## ► Advantages

Born for the rehabilitation of reduced anatomical spaces such as the **inferior incisors and upper laterals**, way Slim **facilitates the management of those cases**, where the traditional diameters would require more complex or less satisfying solutions for the patient.



**Geass srl**

Via Madonna della Salute, 23  
33050 Pozzuolo del Friuli (UD) Italy  
tel +39 0432 669191 info@geass.it  
[www.geass.it](http://www.geass.it)

